

# Mitron C2300 series Door Closer

## DESCRIPTION

Single action reversible fully concealed door closer with hydraulic check action and rack & pinion mechanism. This model may also be mounted on the surface of the door with optional cover plates.

## FINISHES

**SN/SS** Satin Nickel / Stainless Steel,  
**CP/PS** Polished Chrome / Stainless Steel,  
**PB/BS** Polished Brass Plated / Anodised.  
 Covers are solid metal, all finishes available.

## SIZES

**C2303** Medium for doors up to 950mm wide.  
**C2302** Light for non-fire rated doors up to 850mm wide.  
 Stand open device is supplied as standard.  
 This must not be used on fire doors.

## INTUMESCENT

For both half hour and one hour fire doors, these closers must be fitted with the optional adhesive Intumescent Pack. This is easily applied to the door closer before fitting.

## FIRE TEST

The Mitron Door Closer has been tested in a timber 'Halspan' fire door blank. For 30 minutes in a 44mm thick door and 60 minutes in a 54mm thick door. A copy of the report is available upon request.

## ADJUSTMENTS

1. To control the speed of closing during the last 80° of cycle.
2. To accelerate closing for the last 20° of the cycle to overcome stubborn latch bolts.

## ANGLE OF OPENING

The door opening angle can be varied according to fixing position. Doors must be fitted with a stop, at least 2/3 of door width away from the hinge, to prevent damage.

## FIXING

A minimum top rail depth of 120mm in timber (hardwood preferred) is required. Detailed fixing instructions are supplied with each closer.

## MAINTENANCE

All integral working parts are completely immersed in oil to ensure long working life. Quarterly check that the door closers and all fixing screws are tight. A small quantity of grease applied to the inside of the track will maintain optimum performance.

## GUARANTEE

A 3 year guarantee with free replacement ex-works of any closer proved defective by reason either of faulty manufacture or defect in materials.



Closer is fully concealed in door



Only Visible when Door is Open



**C23VF** Full Width Surface Mounting Cover, (State Size Required), Closer, Arm & Track



**C23VM** Surface Mounting Cover, Closer, Arm & Track *ONLY 34mm DEEP*



**C23F6** Surface Soffit Arm, Closer & Cover



**C23F1** Surface Standard Arm, closer & cover



**C2INT** Intumescent Pack for up to 1 Hour Fire Door



Variable Stand Open Device (Not for use on Fire Doors)



## C8DW1 Doordwell

Wall or Floor Mounted Delayed Action Device



**C2303** Door Closer, Arm & Track

Available from:

Cairney Hardware Limited  
 1 Distillery Lane EDINBURGH  
 EH11 2BD United Kingdom  
 tel. 0131 313 1303 fax. 0131 313 1305  
 e-mail sales@cairney.com



www.mitron.co.uk



www.mitron.co.uk

## Trade Prices

All three finishes same price.

C2303 Closer, track & arm	£60.00
C2302 Closer, track & arm	£60.00
C23F1 Closer, cover & F1 arm	£70.00
C23F6 Closer, cover & F6 arm	£70.00
C2INT Intumescent pack	£30.00
C2V2M Closer cover only	£20.00
C2V3M Long cover only	£60.00
C8DW1 Doordwell Unit*	£27.50

## Specials P.O.A.

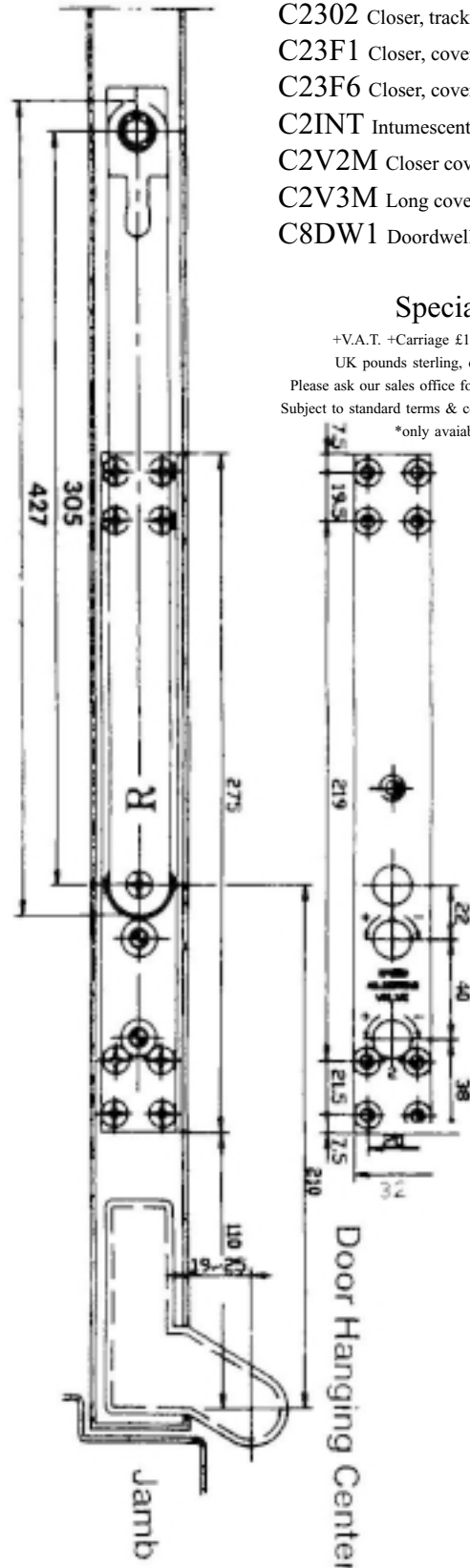
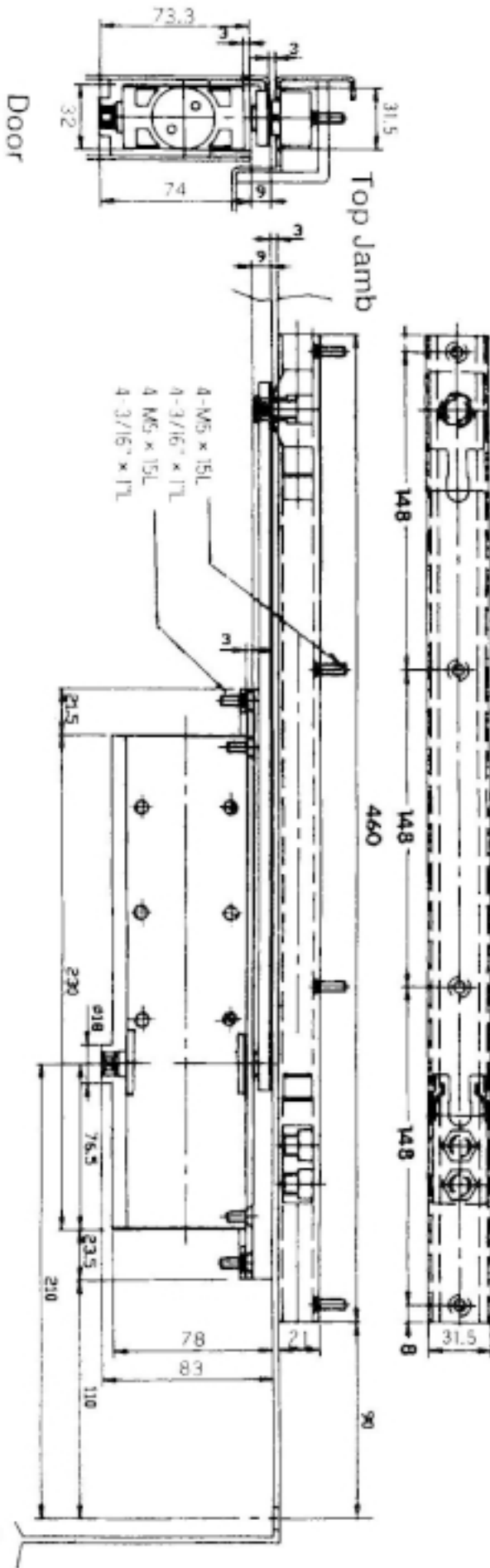
+V.A.T. +Carriage £12.50 for orders under £500.

UK pounds sterling, delivery UK mainland only.

Please ask our sales office for quantity & re-sale discount rates.

Subject to standard terms & conditions, copy available on request.

\*only available in grey painted



Fixing Details (Closer can also be mounted in frame or face of door)